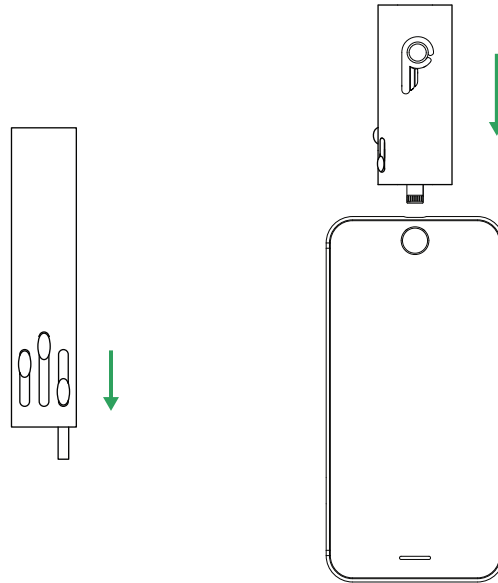


GETTING STARTED

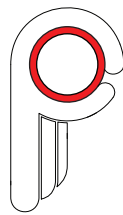


1. Charge your Pinch

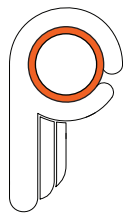
Select the desired charging connector and push the corresponding slider downwards plug into your device



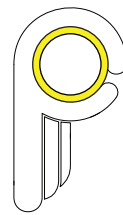
The LED ring will blink indicating the level of charge
Solid green indicates full battery



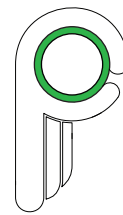
Critical



Low

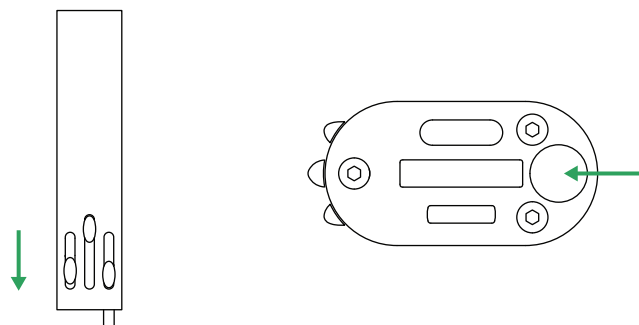


Medium



Full

To retract the charging connector, push an alternate slider downwards or press the release button on the bottom of Pinch

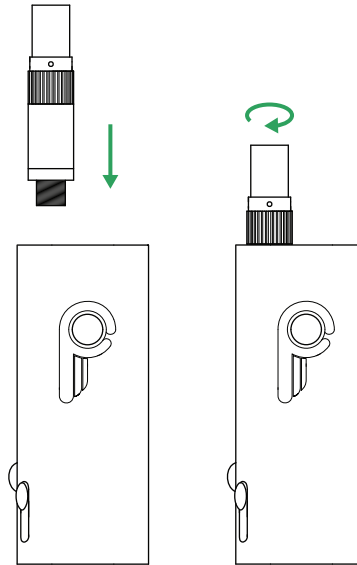




GETTING STARTED

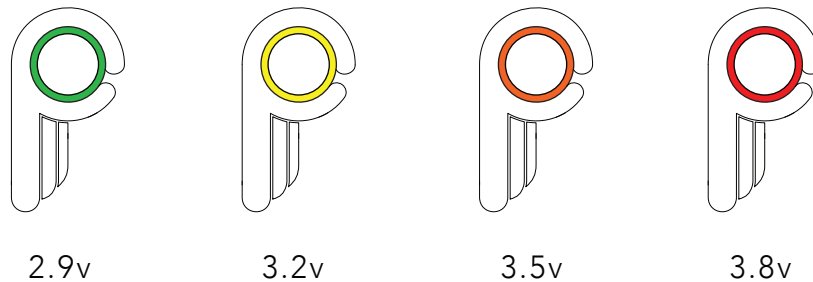
2. Insert cartridge

Place pre-filled 510 cartridge into the body of Pinch and thread clockwise
– Be careful not to screw in too tightly



3. Set voltage

Triple-click the main button to select the proper voltage for your oil/liquid

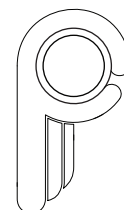


The higher the voltage, the more heat is generated in the coil of the cartridge.
Thicker oils generally require a higher voltage, but it is recommended that you start on the lowest setting and work your way up. Excessive heat can burn the contents of the cartridge and ruin the taste.
– Never attempt to vape an empty cartridge

4. Vaporize

Press and hold main button as you inhale

To check battery level, double-click main button



MAINTAINENCE



5. Cleaning

To keep Pinch in top working condition, it must be cleaned periodically

A cotton swab with a little isopropyl alcohol works well

Lightly dab the interior of the cartridge thread with the swab to remove residue

